

SINGER® PROJECTS Sewing Machine Mat with Pockets



This handy sewing machine mat with pockets not only helps protect your table surface, it keeps your “go-to” notions right at your fingertips. The four pockets in front are perfect for your small scissors, hem rulers, fabric marking tools and more.

Note: Finished size of the mat is 16” x 20” and accommodates most standard sewing machine sizes. Adjust fabric requirements, if needed, for machines with a larger footprint than that of a standard sewing machine.

PROJECT SKILL LEVEL: ■■■□□

Shopping List

Everything you need to complete this project in one place. Use this convenient checklist to ensure you have all required materials in your sewing room, or take it with you when you shop for supplies.

- Main fabric for top of mat: 17" x 21" (43.2cm x 53.5cm)
- Lining fabric for back of mat: 17" x 21" (43.2cm x 53.5cm)
- Outer fabric for pocket section: 4½" x 21" (11.5cm x 53.5cm)
- Lining fabric for pocket section: 4½" x 21" (11.5cm x 53.5cm)
- Lightweight fusible batting: 17" x 21" (43.2cm x 53.5cm)
- Firm-weight fusible interfacing: 17" x 21" (43.2cm x 53.5cm)
- Medium-weight fusible interfacing: 4½" x 21" (11.5cm x 53.5cm)
- Extra-wide double fold bias tape: 1 piece 22" (56cm) long
- Three sew-on buttons
- All-purpose sewing thread
- Rotary cutter, mat and ruler
- Fabric marking tool
- Hand sewing needle

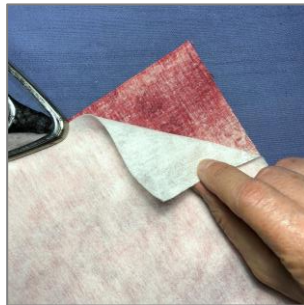
Sewing Directions

Note: Seam allowances are 1/2", unless stated otherwise.

1. Apply the 17" x 21" (43.2cm x 53.5cm) fusible batting to the back side of the 17" x 21" (43.2cm x 53.5cm) main fabric, following the fusible batting manufacturer's recommendations for application. Set aside for now.



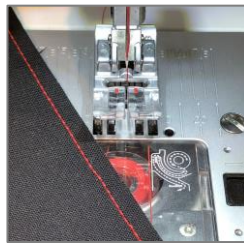
2. Apply the 17" x 21" (43.2cm x 53.5cm) firm-weight fusible interfacing to the back side of the 17" x 21" (43.2cm x 53.5cm) lining fabric, following the interfacing manufacturer's recommendations for application. Set aside for now.



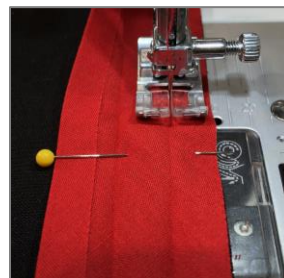
3. Apply the 4 1/2" x 21" (11.5cm x 53.5cm) medium-weight fusible interfacing to the wrong side of the 4 1/2" x 21" (11.5cm x 53.5cm) pocket lining fabric, following interfacing manufacturer's recommendations for application.



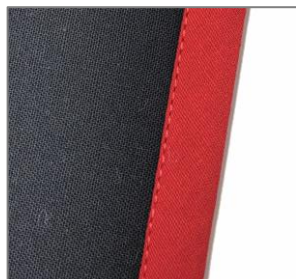
4. Thread the top of the machine and bobbin with all-purpose sewing thread. Set the machine for straight stitch with a medium stitch length setting, about 2.5mm.
5. Place both 4½" x 21" (11.5cm x 53.5cm) pocket fabric strips together, with wrong sides facing, and pin. You may find it helpful to stitch the fabric layers together first, before applying the bias tape, so that the layers don't shift while you sew.
Note: Sew just one long edge of the pocket unit, stitching approximately ¼" or less from the edge, so you don't see the stitching after the bias tape is sewn on.



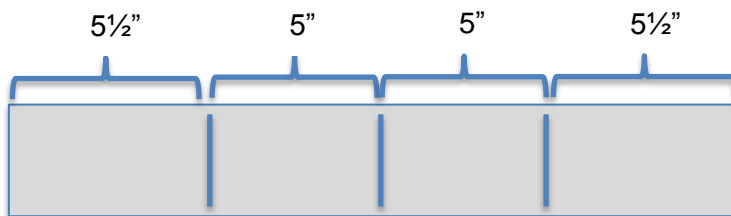
6. Unfold the bias tape, then align one raw edge of the bias tape with one long edge of the pocket unit. Sew, stitching within the fold of the bias tape, as shown below.
Note: If you are using purchased bias tape that came in a package, notice that one side of the bias tape is wider than the other. Pin the tape so the narrower side is on the pocket unit front, so that the wider side will then be on the back.



7. When finished, fold the tape over the raw edge of the pocket, encasing the edge. It should fold over smoothly, but if it doesn't, just trim away very slightly from the raw edges. Press. Stitch the bias from the top side, next to the edge of the tape, which will catch the back side of the tape as well, securing it in place. When finished sewing the tape, trim away excess from each side of the pocket unit.



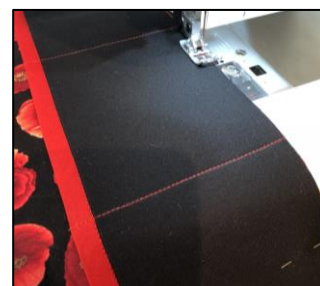
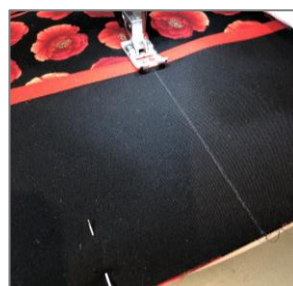
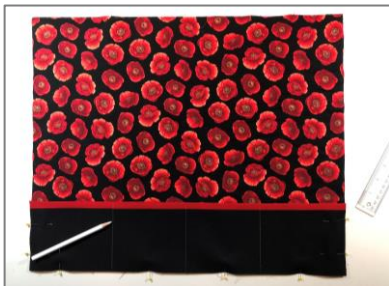
8. Pin the prepared pocket unit to the top of the main mat fabric front, with bottom long edges and side edges even. Use a ruler and fabric marking tool to draw 3 vertical lines on the pocket section as stitching guidelines for sewing pockets. *Note: Remember to include an extra ½” on each short side of the fabric strip, which will allow for the ½” seam allowances when constructing the mat.*



Tip: The pockets shown are evenly spaced, but if desired, the stitch guidelines can be drawn wherever you want to create pockets in different sizes.



9. With the pocket unit pinned to the mat front section, stitch along the drawn lines to create the individual pockets. Stitch the center line first, then stitch the left and right, creating the four pockets. If desired, stitch around the pocket unit within the seam allowances, to hold the layers in place for the next step.



10. Lay the front side of the lining onto the front side of the mat and pocket piece. Pin, then stitch all four sides, leaving a 4” opening (for turning right side out).



← 4” opening on the side opposite the pockets

11. To reduce bulk, clip the corners and grade the seam allowances. Turn the mat right side out and press. Hand sewing the opening closed.



Grading the seam allowance means trimming back only one side of the seam allowance after the seam has been sewn. Then, when the project is turned right side out, the bulk is reduced, providing a smoother finish on the outside of the project.

12. To further secure the pockets, attach buttons over the bias tape, stitching through all layers of the mat.



Note: To see a video demonstration on how to sew buttons using a sewing machine:

- 1) Visit the SINGER® Sewing Company YouTube Channel, by searching: singersewingcompanyyoutube

This will take you to:

<https://www.youtube.com/user/SingerSewingCompany>

- 2) Then, in the search bar of the SINGER YouTube Channel, type: Button Sewing Presser Foot Tutorial

- 3) Click on the tutorial to open and view the short video demonstration.